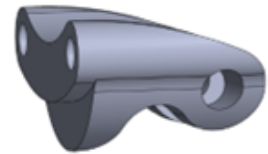


*To complement our dental headlight design, we provide an extensive selection of brackets designed to accommodate various loupes available in the market.*

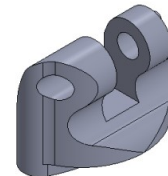
*Many brackets have been produced and are in stock, should your Loupes require a different product PureVu will work with you to produce a bespoke solution.*

### PVEXVISCLAMPKIT

- Designed for Exam Vision loupes
- Made of aluminium for light weight
- Can take extension of **PVCLAMPY**

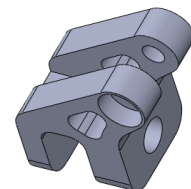


PVEXVISCLAMPKIT	
PVEXVISCLAMP	1
M1.6X5PAN A2 SS	2
M2X8CAPHEAD	1

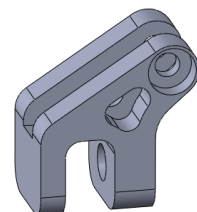


### PVDFVCLAMPKIT

- Designed to fit Designs for Vision loupes
- Can fit other loupe frames designs
- Made of aluminium for light weight
- Comes with extension **PVCLAMPY**



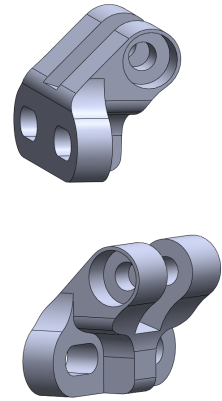
PVDFVCLAMPKIT	
PVDFVCLAMP	1
M3x5GRUBTIP	1
M2x8 CAPHEAD screw	1
PVCLAMPY	1
M2x10 CAPHEAD screw	1



## PVORASCLAMPKIT

- Designed specifically to fit some Orascoptic loupes
- Can fit other loupe frames designs
- Made of aluminium for light weight
- Available with imperial thread screws
- Can take extension of **PVCLMPY**

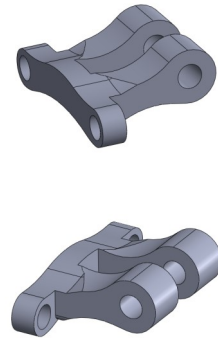
PVORASCLAMPKIT	
PVORASCLAMP	1
M2X10	1
UNC2-56X3/16SS	2



## PVUNIVETCLAMPKIT

- Designed specifically to fit some Univet loupes
- Made of aluminium for light weight
- Can take extension of **PVCLAMPY**.

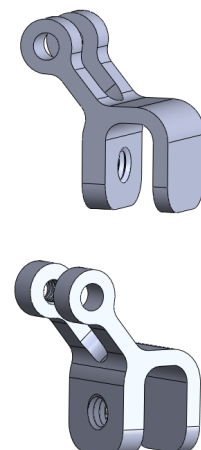
PVUNIVETCLAMPKIT	
PVUNIVETCLAMP	1
M2X10MM BOLT	1
M1.6x4 CHEESEHEAD	2



## PVTITANCLAMPKIT

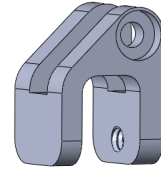
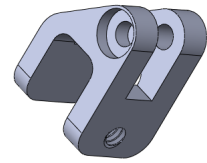
- Made of titanium for thermal efficiency
- Can fit many loupe models on the market
- Can take extension of **PVCLAMPY**.

1. PVCLAMPPTITKIT	
PVTITANCLAMP	1
M3X5GRUBTIP	1
M2X7 CAP HEAD SCREW	1
PVCLAMPY	1
M2X8MM CAP HEAD SCREW	1



### PV6MMCLAMPKIT

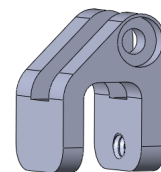
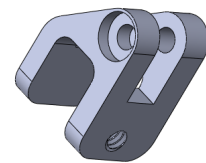
- Design based on PVDFVCLAMPKIT
- Designed to fit up to 6mm wide loupe frames
- Made of aluminium for light weight
- Can take extension of **PVCLMPY**.



PV6MMCLAMPKIT	
PV6MMCLAMP	1
M3X5GRUBTIP	1
M2X8 CAP HEAD SCREW	2

### PV8MMCLAMPKIT

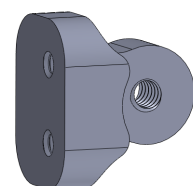
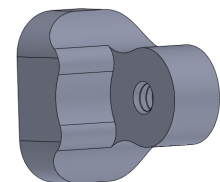
- Design based on PVDFVCLAMPKIT
- Designed to fit up to 8mm wide loupe frames,
- Made of aluminium for light weight
- Comes with extension of **PVCLMPY**.



PV8MMCLAMPKIT	
PV8MMCLAMP	1
M3X5GRUBTIP	1
M2X5MM CAP HEAD SCREW	1
PVCLAMPY	1
M2X8MM CAP HEAD SCREW	1

### PVMARROCLAMPKIT

- Designed specifically for Marrodent loupes
- Made of aluminium for light weight

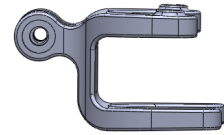
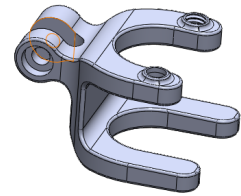


PVMARROCLAMPKIT	
MARROCLAMP	1
M2X6MM CAP HEAD SCREW	1
M1.6X6MM CAPHEAD	2

### PVSURGITELCLAMPKIT

- Designed to fit Surgitel Flip-up loupes.
- Made of aluminium to keep the weight as low as possible.
- Simply slide in onto loupes front and attach PureVu light with single bolt.

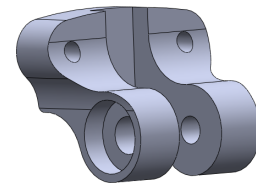
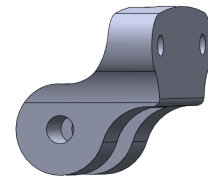
PVSURGITELCLAMPKIT	
PVSURGITELCLAMP	1
M2x8MM CAP HEAD	1



### PVOPTCLAMPKIT

- Designed specifically for Optergo (UK) loupes
- Made of aluminium for light weight
- Can take extension of **PVCLMPY**.

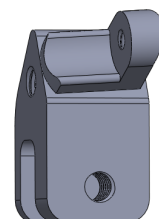
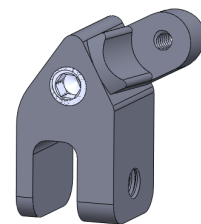
PVOPTCLAMPKIT	
M1.4x5mm Cheesehead screw	2
M2x7mm	1
PVOPTCLAMP	1



### PVROTCLAMPKIT

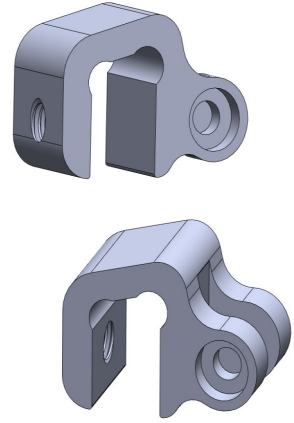
- Designed for extra angle movement
- Made of aluminium for light weight
- Fits loupe frames up to 4mm wide

PVROTCLAMPKIT	
ROTCLAMP 2	1
ROTCLAMP 3	1
M3x5GRUBTIP	2
M2x8 CAPHEAD screw	1
M2x5 CAPHEAD screw	1



### PV1CLAMPKIT

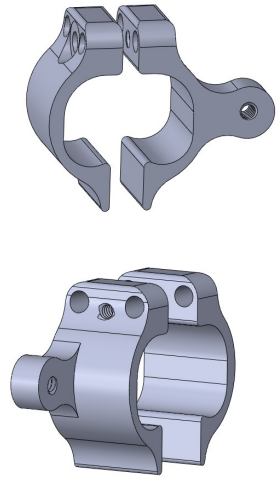
- Designed specifically for PureVu loupes
- Made of aluminium for light weight



PV1CLAMP	
PV1CLAMP	1
M3x6 GRUB screw	1
M2x7 CAP HEAD SCREW	1

### PVCLAMCLAMPKIT

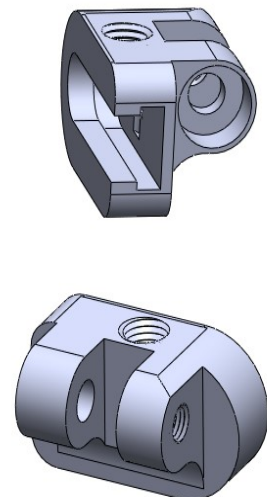
- Designed to fit unusual loupe frames
- Made of aluminium for light weight
- Can fit various frame designs



PVCLAMCLAMPKIT	
PVCLAMCLAMP3	1
PVCLAMCLAMP4	1
2MMx8MM DOWEL PIN	2
M2X10MM CAP HEAD SCREW	1
M2X5MM CAP HEAD SCREW	1

### PVQOPTIXCLAMP

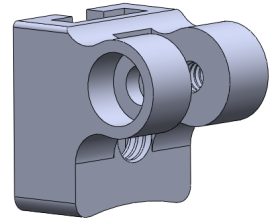
- Designed for Q-optix loupes
- Made of aluminium for light weight
- Easy slide in & lock fitting



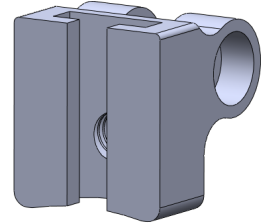
PVQOPTIXCLAMPKIT	
PVQOPTIXCLAMP	1
M2x7CAPHEAD screw	1
M3x3GRUB	1

## PVDFV2CLAMPKIT

- Second design of bracket for Designs for Vision loupes
- Made of aluminium for light weight
- Easy slide in & lock fitting



PVDFV2CLAMPKIT	
PVDFV2CLAMP	1
M2x7 CAPHEAD screw	1
M3x3GRUB	1



## PVCLAMPY

- Bracket extension
- Designed for heat reduction in combination with other brackets
- Made of PEEK composite for thermal efficiency

